

Science**Multiple Choice Questions****15 × 1=15**

- 1) While shaping gold into ornaments, which part of the flame directly used by goldsmith? **1**
- A) Non-luminous
 - B) Luminous
 - C) Innermost zone
 - D) Whole flame
- 2) Penicillin, the first antibiotic, was discovered by which scientist? **1**
- A) Louis Pasteur
 - B) Robert Koch
 - C) Alexander Fleming
 - D) Edward Jenner
- 3) Which type of friction occurs when an object moves through air or water? **1**
- A) Sliding friction
 - B) Rolling friction
 - C) Fluid friction
 - D) Static friction
- 4) The gas released during the preparation of bread is **1**
- A) oxygen
 - B) nitrogen
 - C) carbon dioxide
 - D) sulphur dioxide
- 5) The loudness of sound is determined by the **1**
- A) amplitude of vibration
 - B) ratio of amplitude and frequency of vibration
 - C) frequency of vibration
 - D) product of amplitude and frequency of vibration
- 6) Oil refinery is ----- **1**
- A) Wood
 - B) Barauni
 - C) Produce more energy

- 7) What happens to the mass of the cathode during electroplating? 1
- A) It decreases
 - B) It increases
 - C) It remains the same
 - D) It first decreases then increases
- 8) Paheli dug two pits, A and B, in her garden. In pit A, she put a polythene bag packed with some agricultural waste. In pit B, she dumped the same kind of waste but without packing it in a polythene bag. She, then covered both the pits with soil. What did she observe after a month? 1
- A) Waste in pit A degraded faster than that in pit B.
 - B) Waste in pit B degraded faster than that in pit A.
 - C) Waste in both pits degraded almost equally.
 - D) Waste in both pits did not degrade at all.
- 9) Burning of hydrogen is an example of 1
- A) slow combustion
 - B) rapid combustion
 - C) explosion
 - D) spontaneous combustion
- 10) Paddy can be grown in 1
- A) summer season
 - B) autumn
 - C) rainy season
 - D) winter
- 11) Out of the following, which fuel is best used in the homes ? 1
- A) Wood
 - B) CNG
 - C) LPG
 - D) Kerosene oil
- 12) Which statement is true about rolling friction compared to sliding friction? 1
- A) Rolling friction is greater than sliding friction
 - B) Rolling friction is equal to sliding friction
 - C) Rolling friction is less than sliding friction
 - D) Rolling friction does not exist
- 13) Boojho's uncle has set up an electroplating factory near his village. He should dispose off the waste of the factory 1
- A) in the nearby river.
 - B) in the nearby pond.
 - C) in the nearby cornfield.
 - D) according to the disposal guidelines of the local authority.

- 14) The unit of measuring pressure is 1
- A) newton
 B) newton/metre
 C) metre²
 D) metre²/newton
- 15) During dry weather, rubbing a plastic scale with dry hair, attracts small pieces of paper. This is 1 due to
- A) gravitational force
 B) electrostatic force
 C) frictional force
 D) muscular force

Short Answer Questions (2 marks)

7 × 2=14

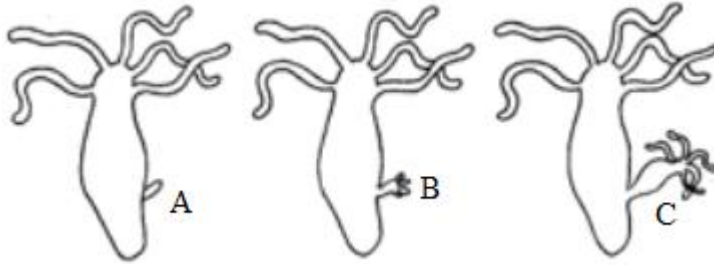
- 16) The caterpillars or the pupa of silkworm looks very different from the adult moth. The features 2 that are present in the adult are not found in these young ones. Then, what happens to the tadpoles or caterpillars thereafter?
- 17) Have you ever thought about why the sole of your shoes is grooved ? 2
- 18) What is fermentation ? 2
- 19) What is the difference between noise and music? Can music become noise sometimes? 2
- 20) What kind of eyes do the insects have ? 2
- 21) What are the types of Bacteria ? 2
- 22) I have heard that some of the endemic species may vanish. Is it true? 2

Short Answer Questions (4 marks)

9 × 4=36

- 23) How does the use of natural gas compare to coal and petroleum in terms of environmental impact? 4
- 24) What is the process of gasification of coal, and how is it used? 4
- 25) What is hypermetropia ? How is it caused ? How can it be corrected ? Draw diagram to show defective eye and its correction. 4
- 26) Why does a candle flame appear yellow, and what does it signify about the combustion process? 4
- 27) What is coal tar, and how is it used in industries? 4
- 28) How does atmospheric pressure change with altitude, and what are its effects on humans? 4
- 29) The diagrams is given showing reproduction in an organism. Observe the diagrams and answer the following questions. 4
- Name the organisms.
 - Name the type of reproduction.
 - Label the diagram.

- Explain the reproduction process.



- | | | |
|-----|--|---|
| 30) | What is regeneration, and how does it help in asexual reproduction in animals? | 4 |
| 31) | What are the advantages of using LPG over other fuels like wood or coal? | 4 |

Short Answer Questions (5 marks)

3 × 5 = 15

- | | | |
|-----|---|---|
| 32) | How does a plough work? | 5 |
| 33) | Give some uses of LED. How should LED be connected? | 5 |
| 34) | List the steps involved in crop production in a flow chart. | 5 |